



TULA REGION



TULA REGION



Population

1.5 million

Total area

25 700 km²

Tula

552 000

Novomoskovsk

138 000

OVERVIEW OF TULA REGION ECONOMY

2016 GRP
at comparable prices

538 bn rubles

↑ 104.7%

2016 Industrial production growth
at comparable prices

112.8%

2016 Investment
at current prices

112.6 bn rubles

↑ 100.2%

Mechanical engineering

30.2%

Food production

18.6%

Chemical production

17.1%

Metals and metalworking

12.2%

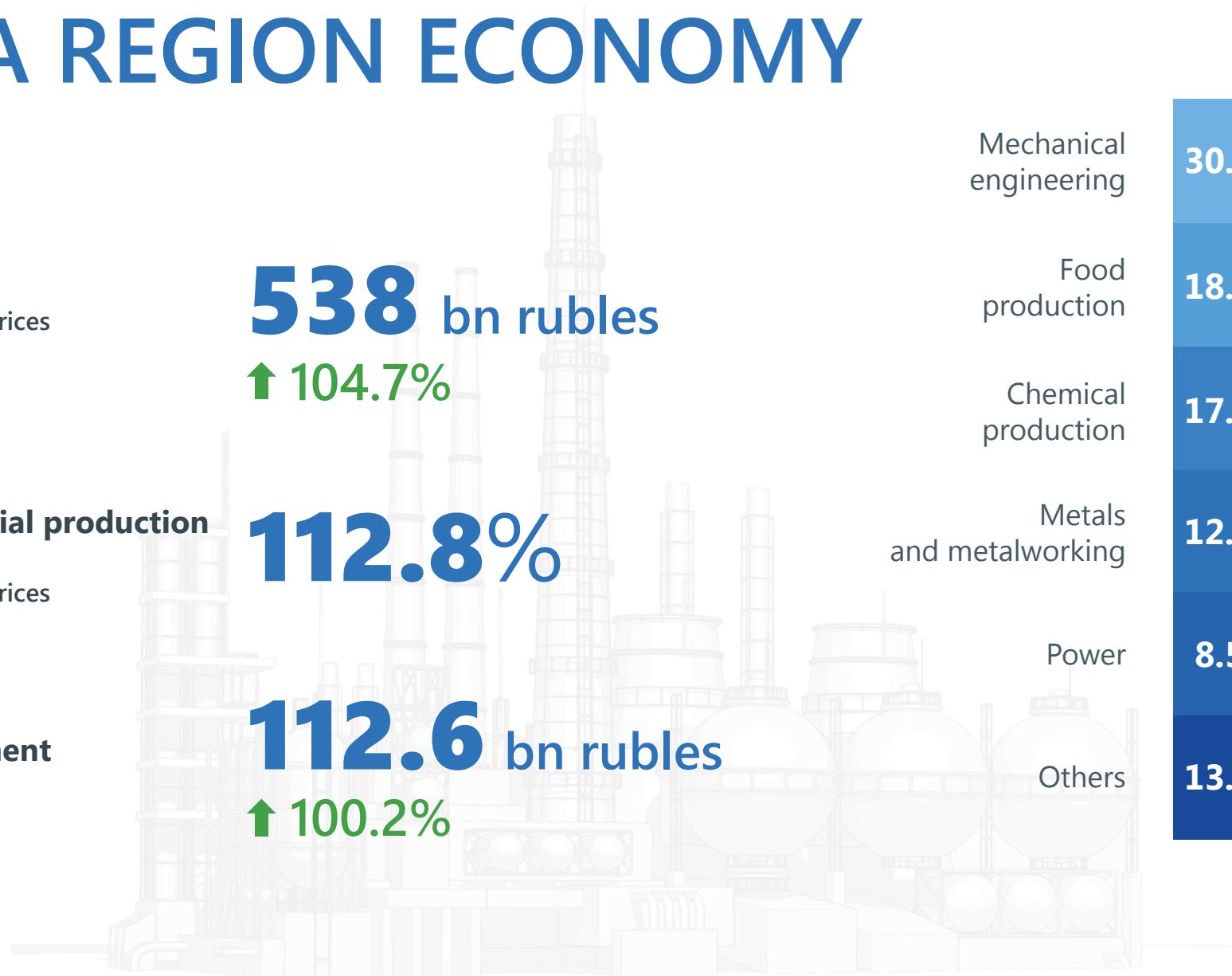
Power

8.5%

Others

13.4%

Industry in the region



FORMULA FOR SUCCESS



FAVORABLE LOGISTICS



In direct proximity
to the largest target market



Major national highways

180 km
from Moscow

Nearest airports:

Domodedovo - **2** hours

Vnukovo - **2** hours

Kaluga - **1** hour and **40** minutes

M2 Crimea

M4 Don

■ Moscow Railway: southern branch
of the Paveletsky route

TAILOR-MADE APPROACH

State support
at both the federal
and regional levels



**TULA REGION
DEVELOPMENT CORPORATION**

One-stop shop
24/7

- Support in establishing local production
- Location matching
- Legal support
- Selection of contractors
- Regional integrated development projects
- Consulting support
- Establishment and development of industrial parks
- PPP projects

TAX BENEFITS



Projects from 50m rubles
According to Tula region law No. 1390-ATR
dated 06.02.2010

**Property tax
reduction for
up to 4 tax periods**

0%

**Income tax
reduction for
up to 4 tax periods**

15.5%

Investments in construction of infrastructure facilities

According to Government Decrees of the Tula region No. 759 dated 18.12.2013,
No. 354 dated 16.07.2013

Projects under special investment contracts

HIGHLY QUALIFIED WORKFORCE



Demand-based education

Annual number
of new graduates:

10 000

higher education

4 000

secondary professional
education

803 000

economically active people

29 400 rubles

average monthly salary

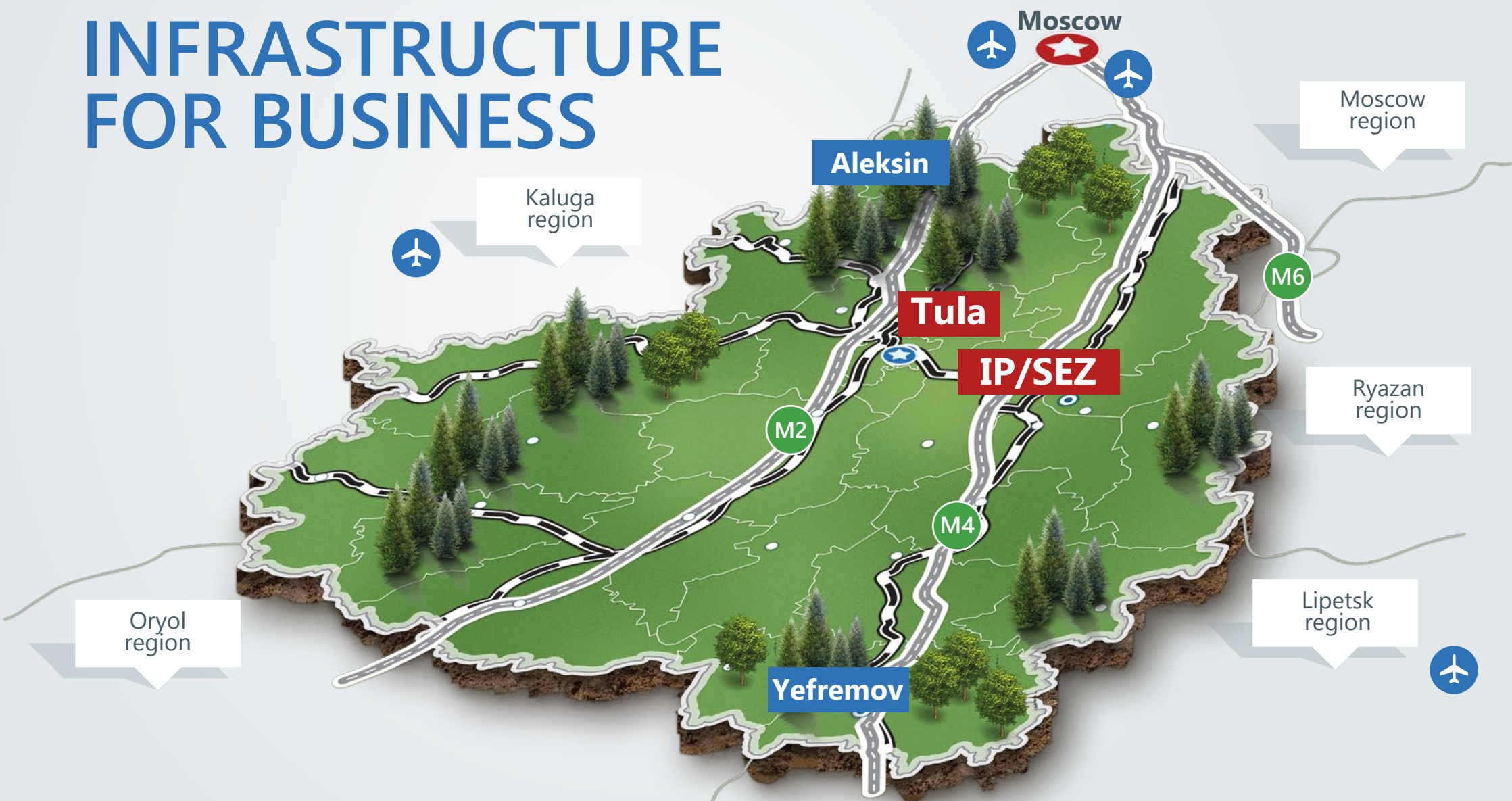
GOOD GOVERNANCE



Results-oriented

- Teamwork with federal authorities and development institutions
- Project management
- One-stop shop
- Roadmaps for facilitation of doing business

INFRASTRUCTURE FOR BUSINESS



Greenfields

100

Brownfields

30

Industrial parks

5

Priority development areas (from 01.01.2018)

2

Uzlovaya SEZ

UZLOVAYA

SPECIAL ECONOMIC ZONE *

TAX
0%

Property tax
(first 10 years)

Transport tax
(first 10 years)

Land tax
(first 5 years)

Duty-free zone regime
(**0%** VAT and import duty until 2065)

Income tax

3% → **7%** → **15.5%**
up to 5 years next 5 years until 2065

Website: uzlovaya.ru



UZLOVAYA

INDUSTRIAL PARK

0% **Property tax**
(first 10 years)

15.5% **Income tax**
(first 10 years)

- ⚡ Electricity supply
- 🔥 Gas supply
- 💧 Water supply
- 🚂 Railway station

RESIDENTS OF THE UZLOVAYA SEZ



Engelsspetstrubmash

Construction of a coiled tubing manufacturing plant

Up to **1.6** bn rubles invested
Up to **30** jobs created



AgroGrib

Construction of a greenhouse complex for growing mushrooms

Up to **6.2** bn rubles invested
Up to **900** jobs created



Arnest MetallPack

Construction of tinplate aerosol cans' manufacturing plant for potential setup of cosmetics and household chemicals' production

Up to **0.6** bn rubles invested
Up to **130** jobs created



RG-Techno Production

Construction of a plant for producing garbage and road-cleaning equipment

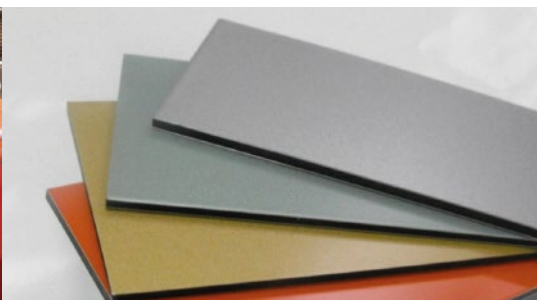
Up to **0.4** bn rubles invested
Up to **120** jobs created



SteelPolymer

Production setup of rolled galvanized steel with polymer coating

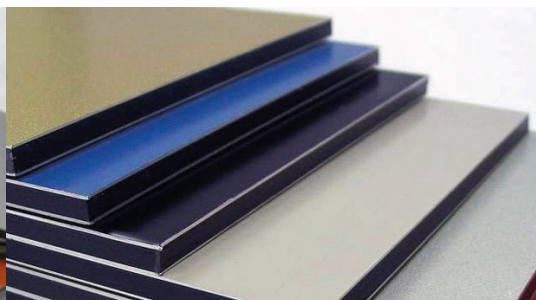
Up to **0,5** bn rubles invested
Up to **60** jobs created



ITEKMA-SYNTHESIS

Low tonnage chemical production setup of components for high tech composite materials

Up to **0,2** bn rubles invested
Up to **40** jobs created



TENZOGRAF

Production setup of high temperature composite sealing materials for hermetic sealing of pipes and equipment. Production setup of climate panels

Up to **0,2** bn rubles invested
Up to **70** jobs created



Universal technologies and materials

Production setup of high tech protective coatings

Up to **0,5** bn rubles invested
Up to **180** jobs created

BENEFITS

	Industrial park	SEZ	PDA
Eligible investment amount, rubles	50 m	120 m	5 m
Income tax	15.5% first 10 years	3% first 5 years : 7% next 5 years : 15.5% after 10 years	≤5% first 5 years : ≥10% next 5 years
Property tax	0% first 10 years	0% first 10 years	0% first 15 years
Land tax	×	0% first 5 years	0% first 5 years
Transport tax	×	0% first 10 years	×
Customs regulations	usual	duty-free zone regime	usual
Period of activity	unlimited	49 years	15 years
Insurance contribution (% of payroll)	×	×	7.6% first 15 years

SUCCESS STORIES

5 000

manufacturers

200

foreign-funded companies

4th

place in the National Rating of Investment Climate in Russian Regions



INVEST-TULA.COM

- УЧЕБНЫЙ ЦЕНТР
- ТЕХНОПАРК «КВ
- МУЗЕЙ СТАНКОВ

- РЕСТОРАН
- ГОСТИНИЧНЫЙ КОМПЛЕКС